



GAT MONTHLY MEMBERSHIP PROGRESS REPORT

Results as of: 6/30/2022

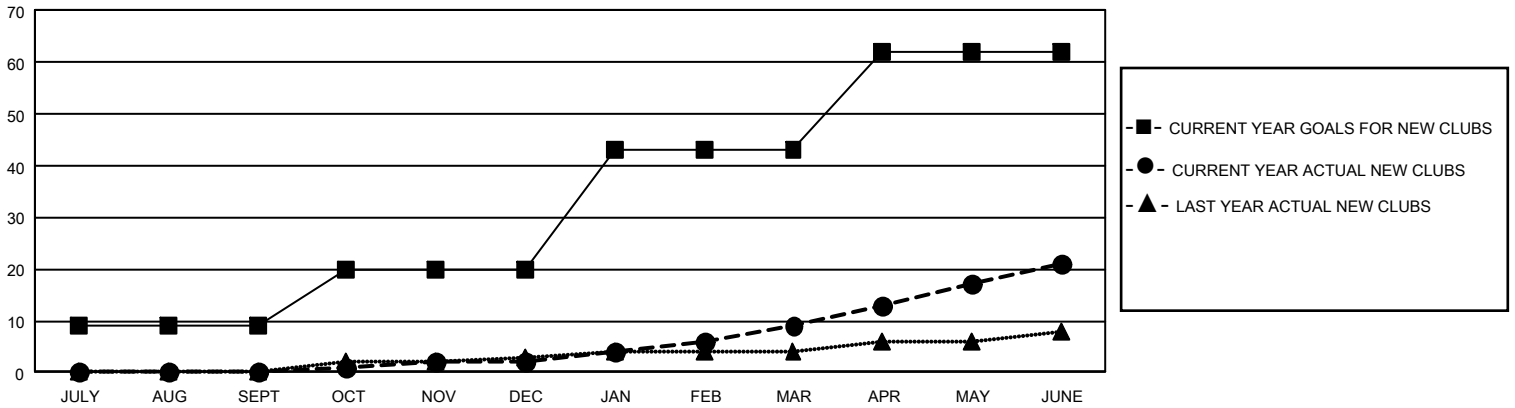
GAT Constitutional Area 5 - Japan

REPORT DOES NOT INCLUDE CLUBS IN UNDISTRICTED AREAS.

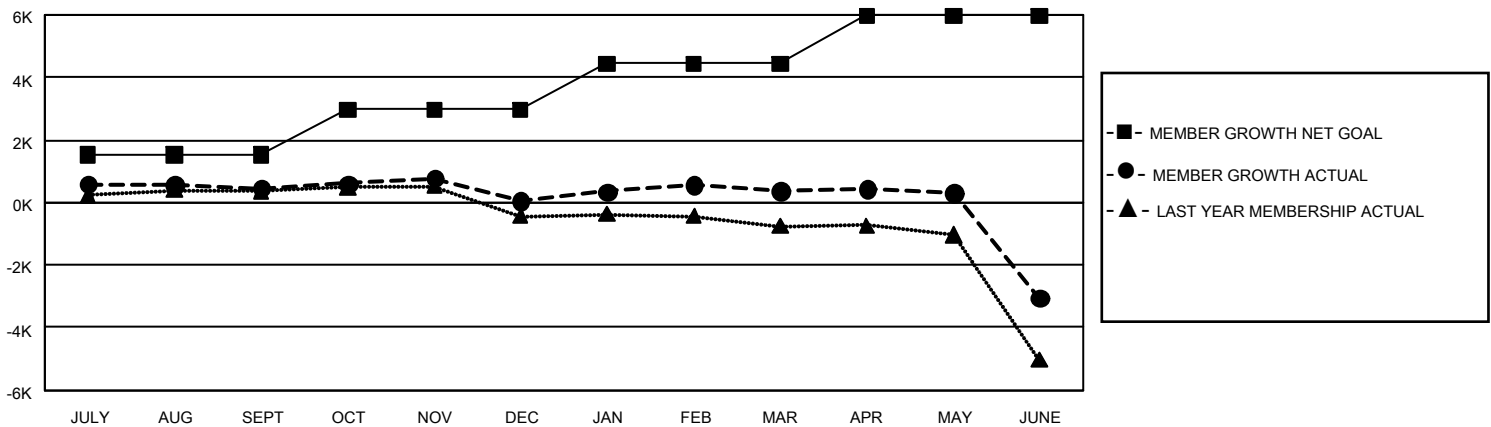
Clubs			
RESULTS FOR 2021-2022			
QUARTER	NEW CLUB GOAL	NEW CLUBS	DROPPED CLUBS
JULY/AUG/SEPT	27	0	5
OCT/NOV/DEC	33	2	10
JAN/FEB/MAR	69	7	4
APR/MAY/JUNE	57	12	48

Members			
RESULTS FOR 2021-2022			
QUARTER	MEMBER GROWTH NET GOAL	MEMBER GROWTH ACTUAL	DROPPED MEMBERS ACTUAL (including transfers)
JULY/AUG/SEPT	1540	1,942	1,350
OCT/NOV/DEC	1435	1,429	1,776
JAN/FEB/MAR	1461	1,637	1,293
APR/MAY/JUNE	1540	2,148	5,459

GOALS AND ACTUAL NEW CLUBS CUMULATIVE



GOALS AND ACTUAL MEMBERS CUMULATIVE



DROPPED CLUBS: 67	
DROPPED MEMBERS	
DECEASED	889
CLUB CANCELLED	174
OTHER	8,815
TOTAL	9,878

1,901 CLUBS OF 2,871 ADDED 1 OR MORE NEW MEMBERS

[CLICK HERE FOR CUMULATIVE MEMBERSHIP DATA](#)

GENDER DISTRIBUTION	
MALE	75,390 (76.48%)
FEMALE	23,175 (23.51%)
NON BINARY	1 (0.00%)
PREFER NOT TO ANSWER	6 (0.01%)
TOTAL FAMILY UNIT MEMBERS	33,925
FAMILY MEMBERS PAYING HALF DUES	18,743